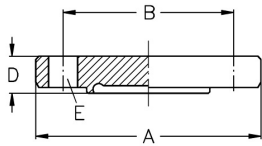
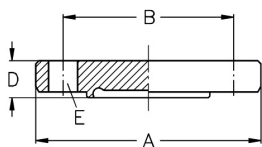
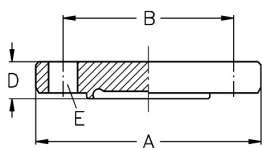


Aseptic-/Hygienic-Flange pipe connections DIN 11853-2 + DIN 11864-2
Art.No
EUR
Art.No
EUR
Blind flange with groove DIN


DN	A	B	D	E		AISI316L-1.4404	AISI316L-1.4435
10	54	37	11,5	4xM8x30		480530	473030
15	59	42	11,5	4xM8x30		480531	473031
20	64	47	11,5	4xM8x30		480532	473032
25	70	53	11,5	4xM8x30		480533	473033
32	76	59	11,5	4xM8x30		480534	473034
40	82	65	11,5	4xM8x30		480535	473035
50	94	77	11,5	4xM8x30		480536	473036
65	113	95	11,5	8xM8x30		480537	473037
80	133	112	13,5	8xM10x35		480538	473038
100	159	137	15,5	8xM10x40		480539	473039
125	183	161	15,5	8xM10x40		480541	
150	213	188	17,5	8xM12x50		480542	

Blind flanges with groove DIN 11853-2 and DIN 11864-2 have the same dimensions.
Blind flange with groove ASME (AISI316L-1.4404)


DN	A	B	D	E			AISI316L-1.4404
1"	66	49	11,5	4xM8x30			480603
1,5"	79	62	11,5	4xM8x30			480604
2"	92	75	11,5	4xM8x30			480605
2,5"	107	89	11,5	8xM8x30			480606
3"	125	104	13,5	8xM10x35			480607
4"	157	135	15,5	8xM10x40			480608

Blind flanges with groove DIN 11853-2 and DIN 11864-2 have the same dimensions.
Blind flange with groove ASME (AISI316L-1.4435)


DN	A	B	D	E			AISI316L-1.4435
0,5"	54	35	11,5	4xM8x30			480701
0,75"	59	40	11,5	4xM8x30			480702
1"	66	49	11,5	4xM8x30			480703
1,5"	79	62	11,5	4xM8x30			480704
2"	92	75	11,5	4xM8x30			480705
2,5"	107	89	11,5	8xM8x30			480706
3"	125	104	13,5	8xM10x35			480707
4"	157	135	15,5	8xM10x40			480708

Blind flanges with groove DIN 11853-2 and DIN 11864-2 have the same dimensions.